

# FARMERS ELECTRIC COOPERATIVE Open Lines

MONTHLY NEWSLETTER

MAY 2023

## INVESTED IN OUR YOUTH:

# 2023 Scholarship Winners

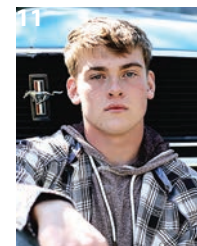
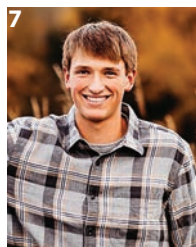
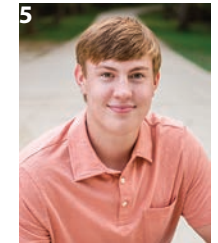
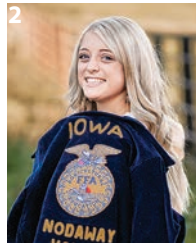


## Energy Efficiency Tip of the Month

The location of your thermostat can impact your HVAC system's ability to maintain an ideal indoor temperature. For maximum accuracy, place them in the center of the home, away from air vents, plumbing pipes, and exterior doors. Avoid placing them near lamps and televisions or in rooms that tend to feel warmer or colder than the rest of the home. Don't place furniture in front of the thermostat, which can block air flow and result in inaccurate readings.



P.O. Box 330  
Greenfield, IA 50849  
FarmersREC.com | (800) 397-4821



**A**s an electric cooperative, Farmers Electric is proud to support our young members and demonstrate our commitment to their futures by offering an annual scholarship. This year, the co-op awarded a total of \$10,000 to 12 local high school seniors. Congratulations to these students!

**1. Addie Burkett, Winterset.** Addie is the daughter of Wendy and Tony Burkett and plans to attend the University of Iowa.

**2. Lily Day, Nodaway Valley.** Lily is the daughter of Christy Kernan and Tad Day and plans to attend Iowa State University.

**3. Boston DeVault, Nodaway Valley.** Boston is the son of Amy and Ryan DeVault and plans to attend Central College.

**4. Garrett Fry, Creston.** Garrett is the son of Mason Fry and Lee Fry and plans to attend DMACC.

**5. Gunnar Goemaat, Winterset.** Gunnar is the son of Janelle and Jeremy Goemaat and plans to attend DMACC.

**6. Quinn Grubbs, Exira-EHK.** Quinn is the daughter of Connie Grubbs and Rodney Grubbs and plans to attend Dordt University.

**7. Connor Pashek, Winterset.** Connor is the son of Ann and Shane Pashek and plans to attend Iowa State University.

continued on pg. 2

# May is Electrical Safety Month

**M**ay is National Electrical Safety Month (NESM) as designated by the Electrical Safety Foundation International (ESFI). It's a month to stress the importance of being safe around electricity and remind those you love to do the same.

At right are some quick reminders of how you can help make your home safer. Be sure to teach others in your home, particularly children, about the importance of electrical safety. According to ESFI, electrical incidents cause 43,900 home fires, 438 deaths and 1,430 injuries annually.

Knowing how to use electronics responsibly and safely can prevent accidents and save lives!

## Scholarships...from pg. 1

### 8. Brandon Raasch, Nodaway Valley.

Brandon is the son of Terri and Trent Raasch and plans to attend DMACC or the University of Northern Ohio.

**9. Megan Riley, Winterset.** Megan is the daughter of Heather and Pat Riley and plans to attend Iowa State University.

**10. Molly Shahan, Winterset.** Molly is the daughter of Melissa and Greg Shahan and plans to attend Iowa State University.

**11. Will Sturdy, Nodaway Valley.** Will is the son of Laura and Mike Sturdy and plans to attend DMACC.

**12. Jayden Wildin, Winterset.** Jayden is the son of Lynn Wildin and the late JD Wildin and plans to attend Southwestern Community College.

## A Safe, Happy House

Four Easy Ways to Boost Electrical Safety at Home



### May is National Electrical Safety Month!

# KNOW YOUR ALERTS

Farmers Electric Cooperative, Inc.  
A Truist Energy Cooperative

**SEVERE THUNDERSTORM WATCH**

- Severe storms are likely to occur

**SEVERE THUNDERSTORM WARNING**

- There is imminent danger to life and property to those in the storm path

**TORNADO WATCH**

- A tornado could form in the next few hours, as conditions are favorable

**TORNADO WARNING**

- A tornado has been reported or the Nat'l Weather Service radar detected a tornado



## Youth Tour Winner!

Farmers Electric is excited to announce that Nodaway Valley student Megan McCall will represent your cooperative on the annual Youth Tour trip to Washington, D.C., in June. Megan will join about 40 other Iowa students



MEGAN MCCALL

along with 1,800 students from across the country in our nation's capital to learn more about cooperatives, U.S. history, and our government. In addition, she will participate in leadership training, engage with elected officials, network with her peers, and tour monuments and museums June 17-23.

Megan is the daughter of Diane and Ray McCall of Fontanelle. A fun fact: Megan's dad represented Farmers Electric on the 1992 Youth Tour and her aunt Jill represented Farmers Electric on the 1995 Youth Tour!

Farmers Electric believes in supporting this program and investing in the next generation of co-op members is very important to the economic future of rural areas.

Congratulations Megan! We hope you have an awesome, educational, and enjoyable time on your trip!

# Sustaining a Reliable Electric System

**D**on't put all your eggs in one basket" is a great way to describe our power supplier's common-sense approach to the current energy transition. We know that our members' interest in renewable energy sources continues to grow, a trend that extends statewide and even across the nation.

Farmers Electric purchases the power you receive from Central Iowa Power Cooperative (CIPCO), a generation and transmission cooperative that owns generation resources and transmits the electricity to 13 member-owned cooperatives and associations across Iowa. We then distribute that power to you.

In addition to the power we receive from CIPCO, Farmers also supports local wind developments by purchasing nearly 11 MW of wind-generated electricity.

We are in step with a national trend to increasingly rely on renewable energy sources as fossil fuel plants are taken off-line, often ahead of schedule. Additionally, we're seeing more pressure on the electric grid due to the increasing frequency and intensity of severe weather events and rising electricity demand.

So how do we reconcile these challenges of grid pressure and a changing fuel mix? Solar and wind energy are certainly beneficial for the environment, but they are limited resources because the sun does not always shine, and the wind does not always blow. Our primary

responsibility is to provide electricity 24/7 to you and our community. To do this, we need reliable sources of power that will meet all the peaks and valleys of on-demand energy in our connected world.

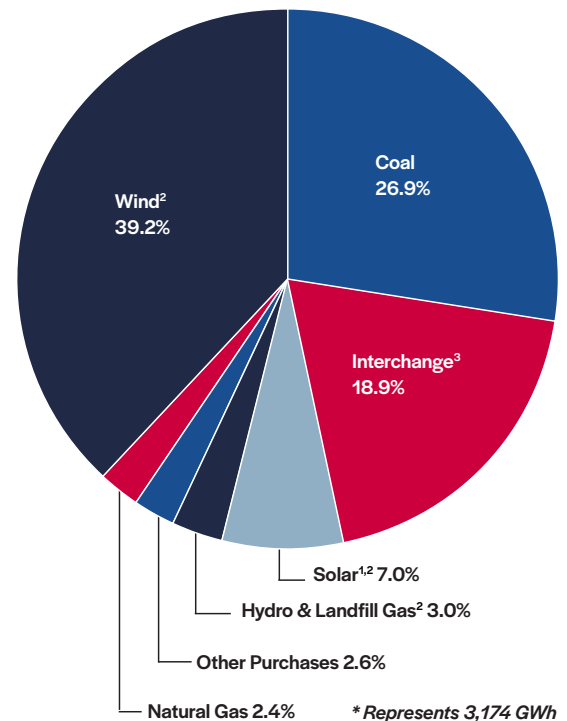


HOLI WESTON  
CEO

That's why we spread our eggs into multiple baskets. There is great value in maintaining a diverse mix of fuel sources—fossil fuels and renewables to ensure reliability, resiliency and meet the growing demand for electricity. As our nation increasingly depends on electricity to power the economy, Farmers Electric and CIPCO are working to anticipate, plan and respond to market trends and policy shifts. That's how we can power your home and our economy, while continuing to serve as your local energy provider.



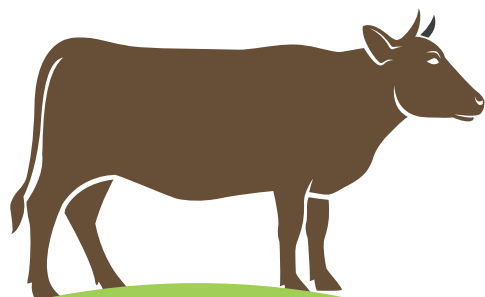
## A BALANCED PORTFOLIO OF ENERGY SOURCES



<sup>1</sup> CIPCO's purchase power agreement for Wapello Solar, LLC, locks in stable, long-term pricing and avoids the risks associated with rising fuel costs. Renewable energy credits (RECs) are not included in this agreement.

<sup>2</sup> CIPCO invests in the development of renewable energy projects in several ways. We operate six small-scale solar arrays near communities we serve and retain the renewable energy credits associated with each. We also contract with energy producers for the electricity output from wind, hydro, and methane gas from a landfill (converted into electricity). CIPCO cannot claim these resources as renewable within our supply portfolio as we have either sold to third parties or do not receive the renewable attributes associated with the electricity produced from these renewable power sources. By selling these attributes (RECs), we not only support other organizations in meeting their renewable energy goals, we also generate revenue to help us lower our wholesale power rate to our 12 Member-owner distribution cooperatives and 15 municipalities.

<sup>3</sup> A percentage of market purchases exist within the portfolio to meet additional supply needs not covered by existing contracts or CIPCO-produced generation. Weather volatility and unplanned operational events at power plants may also impact market purchases.



**MAY IS**  
*Beef Month*

*Beef Bowls*

- 1/4 c. brown sugar, packed
- 1/4 c. reduced sodium soy sauce
- 2 tsp. sesame oil
- 1/2 tsp. crushed red-pepper flakes, or more to taste
- 1/4tsp. ground ginger
- 1 T. vegetable oil
- 3 cloves garlic, minced
- 1 lb. ground beef
- 2 green onions, thinly sliced
- 1/4 tsp. sesame seeds



*iheartnaptime.com*

In a small bowl, whisk together brown sugar, soy sauce, sesame oil, red pepper flakes and ginger. Heat vegetable oil in a large skillet over medium high heat. Add garlic and stir constantly, until fragrant, about one minute. Add ground beef and cook until browned, making sure to crumble the beef as it cooks; drain excess fat. Stir in soy sauce mixture and green onions until well combined, allowing to simmer until heated through, about two minutes. Serve immediately, garnished with green onion and sesame seeds, if desired.

*"Big Mac" Sloppy Joe*

- 1 1/2 lbs. ground beef
- 1/2 yellow onion, finely chopped
- 1/4 c. hamburger pickles, chopped
- 1 tsp. kosher salt
- 1/4 tsp. coarse ground pepper
- 2 tsp. Worcestershire sauce

For sauce:

- 1 c. mayonnaise
- 1/4 c. French dressing
- 2 T. sweet relish
- 1 T. ketchup
- 1 tsp. white vinegar
- 1/4 tsp. onion powder
- 1/8 tsp. salt

To assemble:

- 8 hamburger buns (with seeds)
- 12 hamburger pickle chips
- Additional sauce, optional
- 2 c. iceberg lettuce, shredded
- 4 slices American cheese

Brown your ground beef halfway, about 3-4 minutes, in large skillet, then add chopped onions, salt, pepper and Worcestershire sauce. Cook the beef until fully browned, then add chopped pickles and stir. In medium bowl, combine sauce ingredients and stir well. Add 1 cup of the sauce to the pan; reserve the rest for your buns. Cook one additional minute then assemble as directed.



*lifebyleanna.com*

**Enter to win \$5 off your electric bill!**



Mail your recipe with your bill to: P.O. Box 330, Greenfield, IA 50849; or e-mail to: [HWeston@farmersrec.com](mailto:HWeston@farmersrec.com). Send recipes by the 15th of each month to be included in the newsletter.

JUNE: "Taste of Summer" Recipes  
JULY: Grilling Recipes for National Grilling Month



**Farmers Electric Cooperative**

A Touchstone Energy® Cooperative

Open Lines is a monthly publication of Farmers Electric Cooperative, Inc.

CEO:  
Holi Weston

2389 Highway 92 | P.O. Box 330  
Greenfield, Iowa 50849-0330  
Monday-Friday, 7:30 a.m.- 4 p.m.  
24 hour outside depository  
Ph: (800) 397-4821  
Fax: (641) 343-7187  
[www.farmersrec.com](http://www.farmersrec.com)

**Board of Directors**

Dan Westphal, President  
Kevin Tanner, Secretary  
Cary Gilman  
Mark Earhart  
Kevin Stender

Steve Chandler, Vice President  
RoxAnn Rhoads, Treasurer  
Janelle Peiffer  
Kris Petter

The mission of Farmers Electric Cooperative, Inc., is to deliver safe, reliable, affordable electricity and other services to improve the quality of life within our communities. This institution is an equal opportunity provider and employer.