

FARMERS ELECTRIC COOPERATIVE Open Lines

MONTHLY NEWSLETTER

APRIL 2024



Energy Efficiency Tip of the Month

A well-designed landscape can add beauty to your home and reduce home heating and cooling costs. Plant deciduous trees with high, spreading crowns to the south of your home to block sunlight in the summer and reduce the need for air conditioning. Deciduous trees lose their leaves in the winter, allowing sunlight to warm your home.



Plant evergreen trees and shrubs to block winter winds. Dense evergreen trees and shrubs planted to the north and northwest are the most common type of windbreak and can help lower energy used for home heating. Source: energy.gov



P.O. Box 330
Greenfield, IA 50849
FarmersREC.com | (800) 397-4821

NATIONAL LINEWORKER APPRECIATION DAY

THANK YOU LINEMEN!



NATIONAL LINEWORKER APPRECIATION DAY APRIL 8



Every year, Farmers Electric uses National Lineworker Appreciation Day to recognize and celebrate our co-op's line crew who do so much to keep our power flowing.

From learning the intricacies of the electric grid to climbing utility poles carrying 40+ pounds of equipment, our lineworkers spend thousands of hours of training and learning throughout their career.

Their dedication is nothing short of extraordinary and a testament to their commitment to powering our local communities!

To show your support, use the hashtag #ThankALineworker on social media throughout the month of April.

Please join us in thanking these hardworking linemen, pictured above, from left:

Casey Kindred, Apprentice Lineman

Trey Eddy, Lineman

Nick Kintigh, Line Foreman

Darrian Fischer, Lineman

Paul Weber, Line Foreman

Joe Blankenship, Lineman

Mason Wisse, Apprentice Lineman

Mike Auten, Apprentice Lineman

Paul Paxton, Lineman/Staking Technician

Chad Berrey, Lineman

Ross Wright, Lineman

Sam Dolan, Apprentice Lineman

Dave Shike, Director of Operations

Not pictured: Josh Oder, Lineman

2024 REC Day on the Hill

Representatives from Farmers Electric were on hand March 12 at the State Capitol for the annual REC Day on the Hill. Sponsored by the Iowa Association of Electric Cooperatives, this event provides an opportunity for electric co-ops to meet face-to-face with our legislators and bring up issues important to our members.

During the advocacy event, representatives educated legislators on the benefits of the not-for-profit cooperative business model, which includes local ownership, democratic governance and cost-based rates. Several electric cooperatives displayed booths in the rotunda which provided information on topics including economic development, digital metering advancements, investments in technology, safety innovations, energy efficiency efforts and vegetation management work.

Each year, our discussions focus on key advocacy points developed in response to legislative actions. This year, our focus was on three main priorities:

1. Asking elected officials to ensure reliable electric service for our co-op members by supporting an “all of the above” electric generation strategy;
2. Talking with legislators about Integrated Resource Plans (IRPs) and the potential pitfalls of requiring Iowa utilities to file IRPs as part of contested case proceedings before the Iowa Utilities Board; and
3. Discussing the issue of “right of first refusal” which allows incumbent, established utilities to have the first option to construct, maintain and operate electric transmission projects. Iowa’s electric co-ops are best prepared to respond locally to weather-related outages because we have a proven track record of restoring power quickly and safely.



From left: Board members RoxAnn Rhoads, Mark Earhart, and Dan Westphal (seated); Rep. Thomas Moore; and Holi Weston, CEO.



From left: Weston, Earhart, Westphal, and Rep. Ray Sorensen.

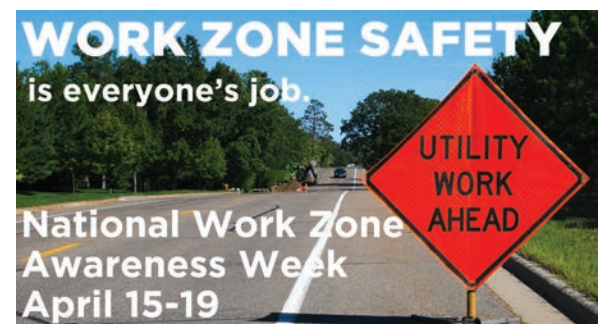


From left: Rhoads, Board member Cary Gilman, Senator Tom Shipley and Earhart.



CO-OPS VOTE
 Help support Lineworkers
BECOME A CO-OP VOTER
 Register to vote today!

Lineworkers help bring power to our community, and you can help them keep the lights on by making your voice heard at the polls on important electric co-op issues. Just like every connection on the grid matters, so does every vote! #CoopsVote #ThankALineworker



WORK ZONE SAFETY
 is everyone's job.
UTILITY WORK AHEAD
 National Work Zone Awareness Week
 April 15-19

Clearing the Path to Reliability

We're lucky to live in a state that has such a variety of beautiful trees that thrive in our climate. Despite their beauty, trees can be a hazard in our line of work if they are not properly maintained. Farmers Electric strives to balance maintaining our beautiful surroundings with ensuring reliable electricity by trimming trees that can cause outages.

Reliability

Overgrown or dead tree limbs are particularly susceptible to breaking or being otherwise pushed into our power lines. While many factors can impact power disruptions, about half of all outages can be attributed to overgrown vegetation.

From now through the late fall, you'll likely come across our line crews or contractor out trimming back tree limbs to keep our lines clear. Taking a preventative maintenance approach saves us time and money when we're working to restore power following a damaging storm.

Safety

Any tree or branch that falls across a power

line creates a potentially dangerous situation. A proactive approach lessens the chances of fallen trees during severe weather events that make it more complicated and dangerous for lineworkers to restore power.



HOLI WESTON
CEO

Affordability

As a co-op, Farmers Electric always strives to keep costs down for our members. If trees and other vegetation are left unchecked, they can become overgrown and expensive to correct. We have a strategic vegetation management program in place to help keep these costs down for everyone.

Additionally, you can help, too. Follow our guidelines for planting new trees to keep them a safe distance from overhead power lines. See the graphic below for details.

With a balanced approach, our vegetation management program is a crucial tool for ensuring service reliability, safety and affordability.

Tree Planting Guide

Several factors need to be considered before you plant a tree. While beautiful, trees require proper care and handling during the early years in order for it to grow and thrive. Here are a few tips to keep in mind if you're planning to plant a tree this spring:

CALL 811 BEFORE YOU DIG.

Several days before planting a tree, call the 811 national hotline to have underground utilities located. It's the law!

HANDLE WITH CARE.

Always lift a tree by the root ball. Keep roots moist until planting.

DIG A PROPER HOLE.

Hole should be 2-5 times wider than the diameter of the root ball, with sloping sides to allow for proper root growth.

PLANTING DEPTH.

The trunk flare should sit slightly above ground level and the top-most roots should be buried 1-2 inches.

FILL THE HOLE.

Backfill with soil and tamp in to fill air spaces.

MULCH.

Allow 1-2 inch clearance between the trunk and the mulch. Mulch should be 2-3 inches deep.

Plant Trees Safely

Before you dig, call 811 to locate buried utility lines.

LOW TREE ZONE

Avoid planting within 20 ft. of power lines. If planting is unavoidable, only plant shrubs and small trees that reach a mature height of 15 ft. or less.

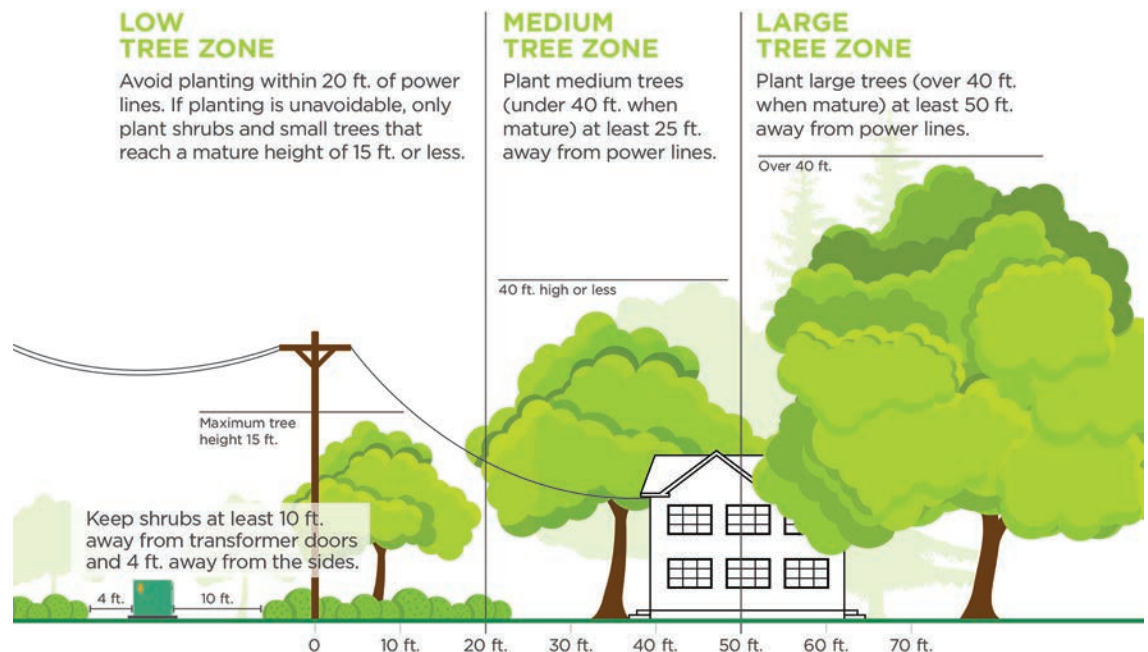
MEDIUM TREE ZONE

Plant medium trees (under 40 ft. when mature) at least 25 ft. away from power lines.

LARGE TREE ZONE

Plant large trees (over 40 ft. when mature) at least 50 ft. away from power lines.

Over 40 ft.





DELICIOUS & CLASSIC

Pasta

Every month, Farmers Electric makes a call for recipes to appear in this newsletter. Submissions are entered to win \$5 off their next electric bill. Just mail your entry with your bill to Farmers Electric Cooperative, P.O. Box 330, Greenfield, IA 50849; or email it to HWeston@farmersrec.com. Here are the recipes we're looking for the next few months:



May: Beef
June: Summer Salads
July: Grilling
August: Vegetables

September: None
October: Pumpkin
November: Thanksgiving
December: Holiday Treats

Crock Pot Lasagna

- 1 lb. lean ground beef
- 1 onion, chopped
- 2 cloves garlic, minced
- 3 1/2 c. spaghetti sauce
- 1 tsp. salt
- 1 tsp. pepper
- 1 12-oz. package lasagna noodles
- 1 c. cottage cheese
- 1 c. ricotta cheese
- 1 egg
- 1/2 c. grated Parmesan cheese
- 4 c. shredded mozzarella cheese



thereciperebel.com

In a large skillet over medium heat cook the ground beef, onion, and garlic until brown. Add salt and pepper and stir until well incorporated. Drain excess grease and return to skillet. Add in spaghetti sauce, mix well and cook for two minutes more. Remove from heat.

In a large bowl mix together the cottage cheese, ricotta cheese, and grated Parmesan cheese along with the egg.

Cheesy Tortellini

- 1 (24 oz.) jar spaghetti sauce
- 1 (15 oz.) jar alfredo sauce
- 24 oz. frozen cheese tortellini
- 1 lb. ground beef



modernmealmakeover.com

In skillet, brown the ground beef, drain and set aside. In large pot, cook tortellini according to package instructions, drain, and return to pot. Add the full jars of both sauces to the drained tortellini pot. Add the ground beef and cook on medium for about 8 minutes.

Spray your crock pot with no-stick cooking spray and add a little bit of the spaghetti sauce to the bottom. Begin layering your ingredients starting with lasagna noodles, meat mixture, and cheese. Repeat until all of your ingredients are gone - ending with meat sauce and cheese on top.

Add the lid on and cook on low for 4-5 hours.



Farmers Electric Cooperative

A Touchstone Energy® Cooperative

Open Lines is a monthly publication of Farmers Electric Cooperative, Inc.

CEO:
Holi Weston

2389 Highway 92 | P.O. Box 330
Greenfield, Iowa 50849-0330
Monday-Friday, 7:30 a.m.- 4 p.m.
24 hour outside depository
Ph: (800) 397-4821
Fax: (641) 343-7187
www.farmersrec.com

Board of Directors

Dan Westphal, President
Kevin Tanner, Secretary
Cary Gilman
Mark Earhart
Kevin Stender

Steve Chandler, Vice President
RoxAnn Rhoads, Treasurer
Janelle Peiffer
Kris Petter

The mission of Farmers Electric Cooperative, Inc., is to deliver safe, reliable, affordable electricity and other services to improve the quality of life within our communities. This institution is an equal opportunity provider and employer.