

# FARMERS ELECTRIC COOPERATIVE Open Lines

MONTHLY NEWSLETTER

MARCH 2024



The Farmers Electric Co-op office will be closed March 29 for Good Friday. Have a wonderful Easter holiday!

## Energy Efficiency Tip of the Month

Lengthen the life of your clothes dryer with regular cleaning. Clean the lint filter after every load, which improves air



circulation and safety. Check the lint trap opening to ensure it's clean. Use a vacuum to remove any lint that's fallen inside the opening. If you use dryer sheets, check the lint filter for residue buildup. Remove any residue with hot water and a nylon brush or toothbrush. Over time, dryer sheets can leave a film on the filter, which can affect the performance of the motor.

Farmers Electric Cooperative, Inc.  
A Touchstone Energy Cooperative

P.O. Box 330  
Greenfield, IA 50849  
FarmersREC.com | (800) 397-4821

### BUILDING A SUSTAINABLE FUTURE:

## Go Green for Renewable Energy

Farmers Electric Cooperative's Green Pricing Program allows members to support the development of renewable energy projects with voluntary contributions to a fund. All the money collected from members is used for the development of alternate energy production facilities in Iowa, including wind, biomass, solar, and other nontraditional generation technologies.

With this program, members do not directly purchase alternate energy, but instead, contributions are set aside by the co-op for the development of these resources. These contributions may be retained until a sufficient

level is available to pursue a particular development project, make a grant to an entity pursuing alternate energy development in Iowa, or arrange for purchases from alternate energy production facilities.

A one-time contribution or a monthly pledge can be easily added to your monthly electric bill. Visit [farmersrec.com/green-pricing-program](http://farmersrec.com/green-pricing-program) to complete the sign up form and find more information.




# WE ARE STORM READY.

Iowa Severe Weather Awareness Week  
March 25-29

Farmers Electric Cooperative, Inc.  
A Touchstone Energy Cooperative

# Planning to Build a New Grain Bin?

If you're considering a new grain bin this spring, remember that it's important to first contact Farmers Electric Cooperative.

Your cooperative will provide assistance in planning for a safe environment for everyone working and living around grain bins. The State of Iowa requires specific clearances for electric lines around grain bins, with different standards for those filled by portable

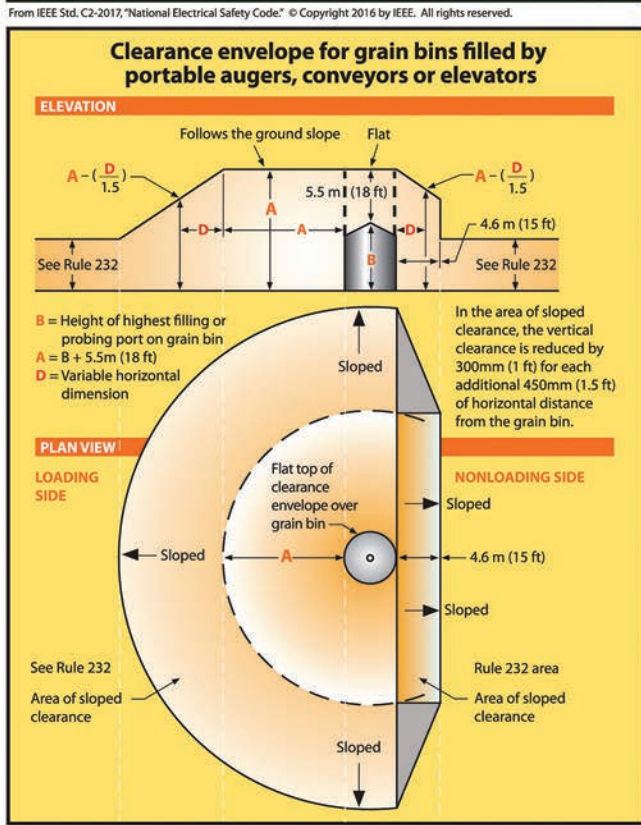
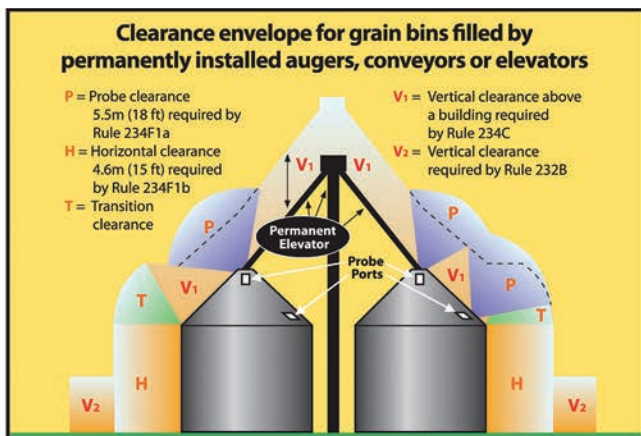
and permanent augers, conveyors and elevators.

The drawings on this page show the specific clearances required for both scenarios. If you have any questions, please call Farmers at (800) 397-4821.

According to the Iowa Electric Safety Code found in Iowa Administrative Code Chapter 199 -- 25.2(3) b.: *An electric utility may refuse to provide electric service to any grain bin built near an existing*

*electric line which does not provide the clearances required by the American National Standards Institute (ANSI) C2-2017 "National Electrical Safety Code," Rule 234F. This paragraph "b" shall apply only to grain bins loaded by portable augers, conveyors or elevator systems installed after December 24, 1997. (As adopted by the Iowa Utilities Board)*

and are based on the 2017 Edition of the National Electrical Safety Code. To view the actual drawings, refer to that publication. Every care has been taken for the correctness of the contents for these drawings. However, the Iowa Association of Electric Cooperatives and its member cooperatives accept no liability whatsoever for omissions or errors, technical inaccuracies, typographical mistakes or damages of any kind arising from the use of the contents of these drawings, whether textual or graphical.



From IEEE Std. C2-2017, "National Electrical Safety Code." © Copyright 2016 by IEEE. All rights reserved. The IEEE disclaims any responsibility or liability resulting from the placement and use in the described manner.



The Iowa Utilities Board requires all non-rate regulated utilities to post the following notice to its membership. If a member has a problem with his/her service, please call or write Farmers Electric Cooperative, Inc., P.O. Box 330, Greenfield, IA 50849 or call (800) 397-4821.

If your complaint is related to service disconnection, safety or engineering standards, or renewable energy and Farmers Electric does not resolve your complaint, you may request assistance from the Iowa Utilities Board by calling (515) 725-7321, or toll-free (877) 565-4450; by writing to 1375 E. Court, Room 69, Des Moines, IA 50319-0069; or sending an email to customer@iub.iowa.gov.

Farmers Electric Cooperative is required by the Iowa Utilities Board to provide this annual notice to farmers, farm lenders, grain bin merchants, and city and county zoning officials. If you have any questions concerning clearance regulations, please contact the cooperative.

*Disclaimer:* These drawings are provided as part of Iowa electric cooperatives' annual public information campaign

**ATTENTION!**  
**Farmers Electric Cooperative Scholarship Deadline**  
**APRIL 3**  
 farmersREC.com

## Winter Moratorium Ends April 1

Members of Farmers Electric Cooperative are reminded that the winter moratorium will end April 1, 2024.

If your account(s) is past due and you have not made a payment arrangement by this date, your service may be disconnected.

Under Iowa's winter moratorium law, qualified customers for the Low-Income Home Energy Assistance Program (LIHEAP) or Weatherization Assistance Program are protected from the annual shutoff of natural gas or electric service from Nov. 1 to April 1.

Iowa customers seeking LIHEAP financial assistance for utility bills should contact their local Community Action Agency before April 30 to discuss eligibility guidelines. The LIHEAP program pays only a portion of utility bills to qualified low-income members.

To avoid disconnection, you must pay your electric bill in full by April 1 or request a reasonable payment agreement for your past due account(s). Iowa Utilities Board (IUB) rules regarding natural gas or electric service disconnections and payment agreements can be found in chapters 19 and 20, Utilities Division (199) of the Iowa Administrative Code.

If you have questions, please call our office at (800) 397-4821.

# Consider a Co-op Career

Every day, technology is changing and advancing how energy is generated and distributed through the electric grid. As the field becomes more specialized, utilities, and especially electric cooperatives, are continually looking for young talent who want to start and grow their career making a difference in the evolving energy industry.

Careers in this area extend beyond linemen who are the most visible representation of the co-op and its operations. At Farmers Electric, we have a broad range of highly trained professionals working "behind the scenes," too. Accounting and finance, member services, information technology, communications and billing are key areas that require skilled personnel to effectively run our business.

In June, the co-op will send one student representative on the 2024 Electric Cooperative Youth Tour, an annual tradition for hundreds of students to travel to Washington, D.C., and learn more about the electric cooperative business model. The free trip includes plenty of sightseeing and face-to-face interactions with our legislators.

In May, we will announce our 2024 scholarship

winners. This is an opportunity for high school seniors – regardless of their intended area of study – to get some financial assistance as they continue their education.

Both of these annual youth opportunities are essential to inspiring the next generation of electric cooperative leaders, even right here at home. As an exciting, challenging and fast-paced industry, energy development and delivery will require top talent to meet shifting market and consumer demands over the next decades. While some areas require years of training, other positions offer on-the-job training, meaning you are paid while you're learning.

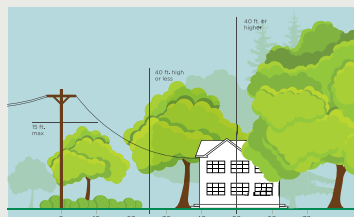
If you or someone you know is struggling to find a career that not only suits them, but also pays well with excellent benefits and employee culture, consider working for an electric cooperative like Farmers Electric. We are happy to host students for a job shadow day to let them see how our cooperative works firsthand. Just give us a call anytime to find out more!



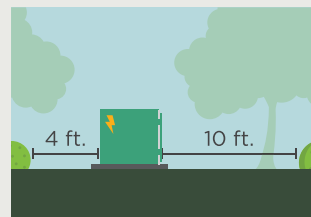
**HOLI WESTON**  
CEO

## 3 Ways to Help Limit Tree Trimming

Did you know Farmers Electric is required to trim trees and other types of vegetation that grow too close to overhead power lines? We know you love your trees, and we will do everything we can to avoid trimming them. Here's how you can help:



**1. Plant trees in the right place.** Trees that will be <40 ft. should be planted at least 25 ft. away from power lines (>40ft. should be at least 50 ft. away).



**2. Don't block pad-mounted transformers.** Plant shrubs at least 10 ft. away from transformer doors and 4 ft. from transformer sides.



**3. Report dangerous branches.** If you spot a tree or branch that is dangerously close to power lines, please call the co-op to let us know.

# BRIGHTEN UP YOUR

# Brunch



**E**aster Sunday brunch is a tradition for many families, but that doesn't mean you can't mix it up with bright new recipes that everyone will love. Easy and springy, this month's recipes will pair nicely with other dishes on your brunchtime table.

## Egg & Cheese Breakfast Casserole

- 1 lb. sausage, browned and drained\*
- 6 slices bread, cubed
- 4 eggs, beaten well
- 2 c. milk
- 1 c. grated cheddar cheese
- Onion and green pepper (chopped and sauteed)
- 1 tsp. prepared yellow mustard
- Salt and pepper to taste



onceuponachef.com

Combine all ingredients in a mixing bowl and pour into 9x13 baking dish. Refrigerate overnight, covered. Bake uncovered at 325° for one hour. \*May substitute diced ham

Vicky See, Peru

## Lemon Coffee Cake

- 1/2 c. butter or margarine, softened
- 1 c. sour cream
- 1 c. sugar
- 2 eggs
- 1 tsp. vanilla
- 1/2 tsp. baking soda
- 2 c. flour
- 1/2 tsp. salt (optional)
- 1 can lemon pie filling



spaceshipsandlaserbeams.com

- Topping:
- 1/2 c. flour
  - 1/2 c. sugar
  - 1/2 c. butter or margarine, cold
  - 1 tsp. cinnamon
  - 1/2 c. chopped nuts

Set oven to 350°. In large bowl, mix together butter/margarine, sour cream, sugar, eggs and vanilla. In separate bowl, sift together flour, baking powder and salt. Stir dry mixture into wet mixture. Spread half of the batter into a greased and floured 9x14 pan. Spread lemon pie filling over the batter. Top with remaining batter. Combine topping ingredients and mix with a pastry blender until crumbly. Sprinkle over batter. Bake at 350 for 45 minutes or until topping is golden.

Sheryl Arment, Lorimor

- April: Pasta
- May: Beef
- June: Summer Salads
- July: Grilling
- August: Vegetables
- September (none, annual meeting issue)
- October: Pumpkin
- November: Thanksgiving
- December: Holiday Treats



Feeling lucky? Submit a recipe for a chance to win \$5 off your next electric bill!



**Farmers Electric Cooperative**

A Touchstone Energy® Cooperative

Open Lines is a monthly publication of Farmers Electric Cooperative, Inc.

CEO:  
Holi Weston

2389 Highway 92 | P.O. Box 330  
Greenfield, Iowa 50849-0330  
Monday-Friday, 7:30 a.m.- 4 p.m.  
24 hour outside depository  
Ph: (800) 397-4821  
Fax: (641) 343-7187  
www.farmersrec.com

Board of Directors  
Dan Westphal, President  
Kevin Tanner, Secretary  
Cary Gilman  
Mark Earhart  
Kevin Stender

Steve Chandler, Vice President  
RoxAnn Rhoads, Treasurer  
Janelle Peiffer  
Kris Petter

The mission of Farmers Electric Cooperative, Inc., is to deliver safe, reliable, affordable electricity and other services to improve the quality of life within our communities. This institution is an equal opportunity provider and employer.