

FARMERS ELECTRIC COOPERATIVE Open Lines

MONTHLY NEWSLETTER

MAY 2026

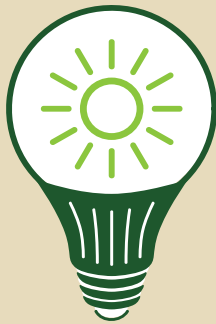
★ ★ ★
MEMORIAL DAY
 REMEMBER AND HONOR



The Farmers Electric office will be closed Monday, May 25

Energy Efficiency Tip of the Month

As temperatures start to rise, don't forget about the small gaps around windows and doors. While air sealing is often associated with keeping cold air out during winter, it's just as important during summer. Tiny cracks and worn weatherstripping allow cool, conditioned air to escape and hot, humid air to seep indoors. This forces your air conditioner to work harder than necessary and increases energy costs. Take a few minutes to check for drafts, replace weatherstripping and seal leaks. A tighter home keeps you more comfortable and helps manage energy use.



2026 SCHOLARSHIP WINNERS



Connor Beane



Jace Bellamy



Caroline Britten



Brooklyn Davis



Delaney Eckles



Kenna Funke



Titus Hamer



Cael Hirsch



Brooks Nedved



Kylie Nelson



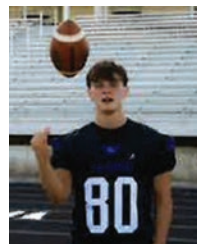
Tyler Pomeroy



Chloe Rardin



Tytus Strode



Remington Woosley

As an electric cooperative, Farmers Electric is proud to support our young members and demonstrate our commitment to their futures by offering scholarships.

This year, the co-op awarded a total of \$10,000 to 14 local high school seniors. Learn more about them on page 2.

Congratulations to these students! We wish you all the best in your future plans!

CLASS OF 2026
Congrats!

MEET THE 2026 CLASS OF CO-OP SCHOLARSHIP WINNERS

CONNOR BEANE, WEST CENTRAL VALLEY. Connor plans to attend Iowa Western Community College in Council Bluffs.

JACE BELLAMY, WINTERSET HS. Jace plans to attend Bemidji State University in Bemidji, Minn.

CAROLINE BRITTEN, NODAWAY VALLEY. Caroline plans to attend Iowa State University in Ames.

BROOKLYN DAVIS, WINTERSET HS. Brooklyn plans to attend Northwest Missouri State University in Maryville, Mo.

DELANEY ECKLES, WINTERSET HS. Delany plans to attend the University of Iowa in Iowa City.

KENNA FUNKE, NODAWAY VALLEY. Kenna plans to attend Southwestern Community College in Creston.

TITUS HAMER, NODAWAY VALLEY. Titus plans to attend Southeast Community College in Milford, Neb.

CAEL HIRSCH, WINTERSET HS. Cael plans to attend Des Moines Area Community College in Ankeny.

BROOKS NEDVED, WINTERSET HS. Brooks plans to attend the University of Northern Iowa in Cedar Falls.

KYLIE NELSON, NODAWAY VALLEY. Kylie plans to attend Iowa State University in Ames.

TYLER POMEROY, WINTERSET HS. Tyler plans to attend Minnesota West Community and Technical College in Worthington, Minn.

CHLOE RARDIN, NODAWAY VALLEY. Chloe plans to attend Iowa State University in Ames.

TYTUS STRODE, NODAWAY VALLEY. Tytus plans to attend Northwestern College in Orange City.

REMINGTON WOOSLEY, NODAWAY VALLEY. Remington plans to attend Iowa State University in Ames.

MERCADO EARNS YOUTH TOUR SLOT

Join us in congratulating Michidel Mercado for earning a trip to Washington, D.C. this summer! Michidel will represent Farmers Electric Cooperative on the National Electric Youth Tour June 14-20.



Michidel is from Greenfield and a junior at Nodaway Valley HS. She is the daughter of Lisel Mercado.



Farmers Electric is one of several participating cooperatives across Iowa that will send a student representative to Washington, D.C. in June. Iowa's delegation is coordinated through the Iowa Association of Electric Cooperatives, who plan for student visits to U.S. representatives' and senators' offices, federal agencies and other educational and sightseeing activities.

During the program, delegates meet each other and hear featured speakers who provide insight into electric cooperatives' important roles in their communities.



Nominate a local volunteer in June and they could win \$3,000 for their charity!

SHINE THE LIGHT

Touchstone Energy
Cooperatives
of Iowa

IowaShineTheLight.com

SAFETY IS SMART. PREVENTION IS POWER.

Knowing when to stop work is one of the most important safety decisions you can make. Whether you're tackling a small home project or working on a large construction site, continuing a job without proper training or the right tools can turn a routine task into a serious accident.

This month is National Electrical Safety Month, an opportunity to raise awareness about the hazards of working with or around electricity whether you are trained or not.

Electrical tasks are particularly unforgiving—one mistake due to lack of knowledge or improper tools can result in severe injury or death. It's important to remember that when you are unsure, stopping is not a weakness—it is a critical safety action.

There are clear warning signs that it's time to stop. If you have not been trained on the equipment, do not understand the procedure, or lack proper protective gear, you are at increased risk.

When you don't feel comfortable proceeding, take practical steps. Pause work immediately and assess the risks. Ask a supervisor, experienced coworker, or qualified professional for guidance. Seek training before continuing, and ensure you have the correct tools and protective equipment. If necessary, refuse to perform the task until it can be done safely.

Ultimately, safety depends on recognizing your limits. Stopping when you are unprepared protects not only you, but everyone around you.

DIRECTORS EARN NATIONAL BOARD LEADERSHIP CERTIFICATES

Two Farmers Electric Cooperative Board Directors have earned national certifications from the National Rural Electric Cooperative Association (NRECA).

Board Secretary Kevin Tanner and Board Member Cary Gilman earned the Board Leadership Credential (BLC), a distinction for REC board directors.

Kevin was elected to the Farmers Electric Board of Directors in 2014 and is currently serving his fourth term. Cary was elected in 2022 and is currently serving his second term.

The BLC is the second of three NRECA director education programs. Courses focus in greater depth on specific industry and governance issues such as risk management, power supply and policy development. These certificates are a mark of distinction and commitment to the cooperative and its membership.

Congratulations, Kevin and Cary!



Board Secretary Kevin Tanner receives his BLC certificate from Board President Dan Westphal at a recent board meeting.



Board member Cary Gilman receives his BLC certificate from Board President Dan Westphal at a recent board meeting.

What is a RED FLAG WARNING?

A Red Flag Warning is issued by the National Weather Service (NWS) when the combination of dry fuels and weather conditions support extreme fire dangers.

Criteria

- Relative humidity less than 25%
- Wind speed (or frequent gusts) above 25 mph
- Already dry fuel (grass, leaves, brush, etc.)

Precautions

- Don't burn grassy areas or brush in the spring
- Don't burn trash (burn barrels, etc.)
- Carefully discard cigarette butts and matches
- Monitor outdoor equipment (field fires are often sparked by hot farm machinery)



cremedelacrumb.com

CROCKPOT BEEF AND BROCCOLI

- 1.5 lb. cubed beef
- 1 c. beef broth
- 2 T. minced garlic
- 1/2 c. low sodium soy sauce
- 1 T. sesame oil (optional)
- 1/3 c. brown sugar
- 1/3 c. cornstarch
- 2 c. broccoli, fresh or frozen

In crock pot, add beef, beef broth, garlic, soy sauce, sesame oil (if using), and brown sugar. Mix well. Cover and cook on high for 3-4 hours or low for 6 hours. Add corn starch and mix well 30 minutes before done to thicken. Add broccoli 30 minutes before done if fresh, or an hour before done if frozen.



togetherasafamily.com

SHEET PAN BEEF QUESADILLAS

- 1 lb. ground beef
- 2-3 T. taco seasoning
- 1/2 white onion, chopped
- 1 c. frozen corn (optional)
- 1 c. black beans (optional)
- 10 oz. can Ro-Tel®
- 6-7 large tortillas
- 2 c. shredded cheese
- 1 T. olive oil

Preheat the oven to 400°F. Brown ground beef until fully cooked and drain grease. Season with taco seasoning. Add onion, Ro-Tel®, and corn and beans, if using. Cook until onions are soft and everything is heated through. Set aside. Line a baking sheet with tortillas so that half of each tortilla is hanging over the edge. Spread beef mixture evenly on top of tortillas. Sprinkle cheese on top of the meat mixture, then fold the overhanging tortillas back over the filling. Place one or two extra tortillas on top to cover any open spots. Brush tops of tortillas lightly with oil. Bake 20 minutes or until golden brown and crispy. Let cool for a few minutes, then slice into squares or triangles and serve with sour cream, guacamole, or salsa.

CALL FOR RECIPES

Each month, Farmers Electric invites readers and members to submit their favorite recipe for publication in this newsletter and a chance to get \$5 off their next electric bill.

To enter, mail your recipe with your bill to: Farmers Electric Cooperative, P.O. Box 330, Greenfield, IA 50849; or email it to: HWeston@farmersrec.com.

JUNE: Salads

JULY: On the Grill

ABOUT US



Farmers Electric Cooperative, Inc.

A Touchstone Energy® Cooperative

Farmers Electric Cooperative, Inc., is a not-for-profit, member-owned electric cooperative, governed by an elected Board of Directors. This institution is an equal opportunity provider and employer.

The mission of Farmers Electric Cooperative, Inc., is to deliver safe, reliable, affordable electricity and other services to improve the quality of life within our communities.

BOARD OF DIRECTORS

President
Dan Westphal

Secretary
Kevin Tanner

Vice President
Mark Earhart

Treasurer
RoxAnn Rhoads

Cary Gilman
Kris Petter
Joe Taylor

Janelle Peiffer
Kevin Stender

CEO: Holi Weston

TIPS TO AVOID ENERGY SCAMS



If you receive a call from someone stating you have overpaid your energy bill and you should provide your banking information or a credit card number to receive a refund, hang up because it's likely a scam. If you overpay your bill, Farmers Electric will apply the overpayment credit to your account balance or mail a check.

